

# Maximum versatility, highly efficient and simple to use.

## STG SERIES ONE LAMP STAGGERED



STAGGERED STRIP 4 1/4" WIDTH, 1 5/8" DEPTH  
NOMINAL 24", 36", 48", 69", 93" LENGTHS  
T8 OR T12 LAMP

Full 3" overlap. Eliminates shadows from lamp ends. Housing only 1 5/8" deep. Safe-handling metal edges. Fully enclosed wire way. Excellent for applications where continuous, even illumination is required.

Project: \_\_\_\_\_  
Location: \_\_\_\_\_  
Catalog No: \_\_\_\_\_  
Fixture Type: \_\_\_\_\_  
Mfg: \_\_\_\_\_ Lamps: \_\_\_\_\_ Qty: \_\_\_\_\_  
Notes: \_\_\_\_\_

### Ordering Guide

Explanation of Catalog Number Example: STG4134HPF120LE

Staggered Channel Strip	Nominal Fixture Length	Number of Lamps in a Luminaire Cross-Section	Lamp Type	Ballast Type	Voltage	Ballast Type	Options
<b>STG</b>		<b>1</b>		<b>HPF</b>			
Staggered Channel Strip 4 1/4" wide x 1 5/8" deep channel	2 = nominal 24" 3 = nominal 36" 4 = nominal 48" 6 = nominal 69" 8 = nominal 93"	1	(Nominal 24") 17 = 17W T8 20 = 20W T12 (Nominal 36") 25 = 25W T8 30 = 30W T12 (Nominal 48") 32 = 32W T8 34 = 34W T12 (Nominal 69") 25 = 25W T8 (tandem) 30 = 30W T12 (tandem) (Nominal 93") 32 = 32W T8 (tandem) 34 = 34W T12 (tandem)	<b>HPF</b> = High Power Factor	120 = 120V 277 = 277V 347 = 347V	<b>LE</b> = Mag. T12 Energy Saving <20THD <10THD <b>SO</b> * <b>RO</b> ** 2 Lamp Elec. T8 <b>04</b> * <b>R4</b> ** 1-4 Lamp Elec. T8 <b>PS</b> — LOL T8 Dimming *Instant start standard **Rapid start standard	Add appropriate suffix to catalog No.

# STG SERIES

## ONE LAMP STAGGERED

### Features

- Full 3" overlap eliminates shadows caused by lampholders or lamp ends.
- Housing is only 1 $\frac{5}{8}$ " deep.
- Safe-handling metal edges.
- Fully enclosed wireway.
- Excellent for perimeter cove lighting or other applications where continuous, even illumination is required.

### Specifications

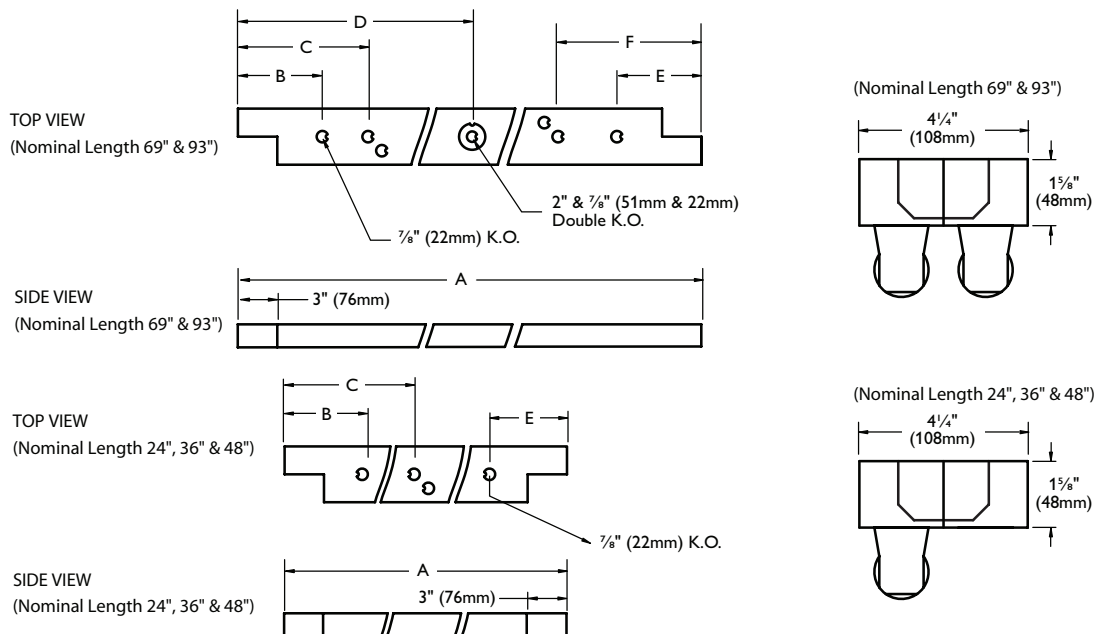
**Materials:** Chassis parts are die-formed heavy gauge cold rolled steel, 1 $\frac{5}{8}$ " deep, 4 $\frac{1}{4}$ " channel width.

**Finish:** Chassis exterior—phosphate undercoating, baked white polyester enamel.  
84% minimum reflectivity.

**Electrical:** Rapid start HPF, thermally protected class "P" ballast C.B.M. certified by E.T.L. If K.O. is within 3" of ballast, use wire suitable for at least 90°.

**Labels:** Listed by CSA.

### Dimensions



Nominal Length	A	B	C	D	E	F
93"	92 $\frac{15}{16}$ " (2361mm)	6 $\frac{7}{16}$ " (164mm)	18 $\frac{15}{16}$ " (1768mm)	46 $\frac{7}{16}$ " (1180mm)	6 $\frac{7}{16}$ " (164mm)	19 $\frac{15}{16}$ " (506mm)
69"	68 $\frac{15}{16}$ " (1751mm)	6 $\frac{7}{16}$ " (164mm)	9 $\frac{15}{16}$ " (599mm)	34 $\frac{7}{16}$ " (875mm)	6 $\frac{7}{16}$ " (164mm)	10 $\frac{15}{16}$ " (278mm)
48"	47 $\frac{15}{16}$ " (1218mm)	5 $\frac{7}{8}$ " (149mm)	24 $\frac{1}{4}$ " (616mm)	N/A	5 $\frac{7}{8}$ " (149mm)	N/A
36"	36 $\frac{15}{16}$ " (913mm)	5 $\frac{7}{8}$ " (149mm)	16 $\frac{1}{4}$ " (413mm)	N/A	5 $\frac{7}{8}$ " (149mm)	N/A
24"	23 $\frac{15}{16}$ " (608mm)	N/A	5 $\frac{3}{8}$ " (137mm)	N/A	N/A	N/A

# STG SERIES ONE LAMP STAGGERED

## Performance

**Report Number:** G89007

**Catalog No:** STG4134HPG120LE

**Lamp Type:** 2F40T12/CW

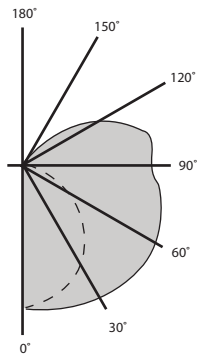
**Lumens per Lamp:** 3150

**Total Efficiency:** 89.5%

**CIE Type:** Semi-Direct

**Spacing Criteria:** 1.6

**Shielding Angle:** 180



### Coefficients of Utilization

RC		80%			50%			30%		
RW		70	50	30	50	30	10	50	30	10
RCR		Zonal Cavity Method Effective Floor Cavity Reflectance = .20								
Room Cavity Ratio	1	89	84	79	71	68	64	64	61	58
	2	80	71	64	60	55	51	54	50	46
	3	72	62	53	52	46	41	47	42	38
	4	65	54	45	46	39	34	41	36	31
	5	59	47	39	40	34	28	36	30	26
	6	54	42	33	36	29	24	32	26	22
	7	50	37	29	32	25	21	29	23	19
	8	46	33	25	29	22	18	26	20	16
	9	43	30	22	26	20	15	23	18	14
	10	40	27	20	24	18	13	21	16	12



© 2013 Koninklijke Philips N.V. All rights reserved.  
Specifications are subject to change without notice.  
[www.philips.com/luminaires](http://www.philips.com/luminaires)

STG Staggered Strip One Lamp 07/13 page 3 of 3

Philips Lighting Company  
200 Franklin Square Drive  
Somerset, NJ 08873  
Phone: 855-486-2216

Philips Lighting Company  
281 Hillmount Road  
Markham ON, Canada L6C 2S3  
Phone: 800-668-9008